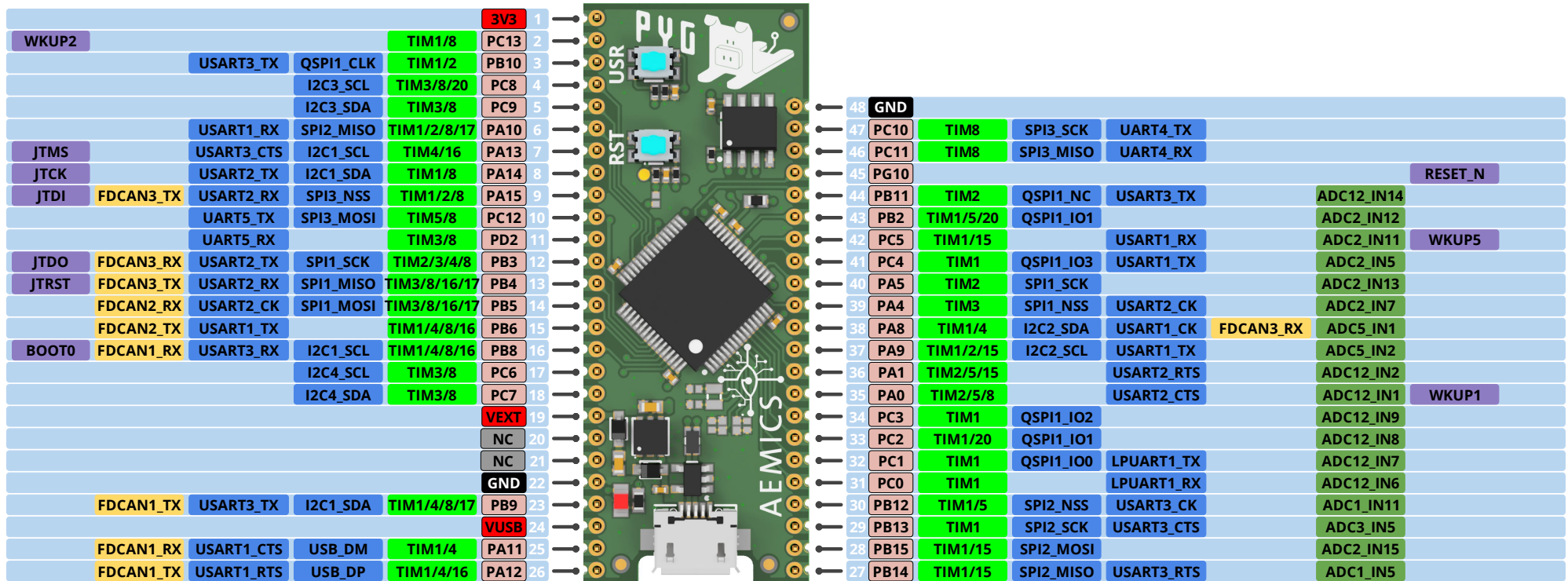


# Pinout Diagram AEMICS PYglet Board



## PIN Types

- Power Pin
- GND Pin
- Not Connected Pin
- STM32G473RBT Pin Name
- Analog Capable Pin
- Serial Capable Pin
- System Function
- Timer / PWM Capable Pin
- FDCAN Capable Pin (Optional)

## On-Board (Fixed) Features

- **PB7** ■ **TIM3/4/17** RED LED - Cathode
- **PA2** ■ **QSPI1\_NC** QuadSPI interface to on-board Flash
- **PA3** ■ **QSPI1\_CLK**
- **PA6** ■ **QSPI1\_IO3**
- **PA7** ■ **QSPI1\_IO2**
- **PB0** ■ **QSPI1\_IO1**
- **PB1** ■ **QSPI1\_IO0**

## Power Supply & Battery

- **3V3** On-Board 3V3 / 1A Supply, **OUTPUT ONLY!**
- **VEXT** External Supply Input, 5V (4.2V - 10V)
- **VUSB** USB power OUTPUT or INPUT (5V), **ONLY USE AS INPUT WHEN NO USB IS CONNECTED!**

Note:

- Board can also be supplied with power through the USB interface (5V)
- All GPIO pins are 5V tolerant

## User button

■ **U** (hold) + ■ **R** (press)

LED flashes:

- 1x ■ Boot normally
- 2x ■ Safe boot (don't run boot.py and main.py)
- 3x ■ Reset filesystem

